

Products for a **simply better**  
**cooking experience.**

A decorative graphic at the bottom of the page, consisting of a series of white dots arranged in a wavy, undulating pattern that spans the width of the page.

Product overview



# BORA cooktop extractor systems

Like cooking in the fresh air – it's second nature to us.

## Which BORA cooktop extractor system is right for me?

Find the perfect product for your cooking needs. Kitchen counter or island? Period property, attic flat, studio apartment or multi-generation house? Our product finder can help with the selection.

Scan to view the product finder:



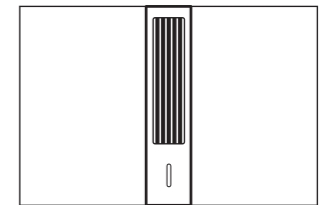
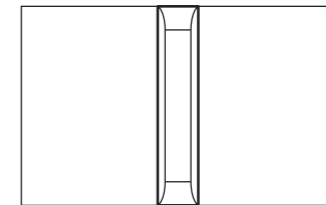
## Exhaust air or recirculation? The BORA systems explained succinctly

All BORA systems can be set up as exhaust air or recirculation versions. With the former, the fan channels cooking vapours straight outside through the BORA Ecotube duct system and the wall sleeve, removing all vapours and odours from the room. In the case of the recirculation version, the fan directs the cooking vapours into the specially developed activated charcoal filter, which effectively eliminates odours. The purified air is recirculated into the room via the plinth area.

Check out the key advantages:



## The modular cooktop extractor systems at a glance



	<b>BORA Professional 3.0</b>	<b>BORA Classic 2.0</b>
<b>MODULAR SYSTEM WITH INDIVIDUAL COOKTOP SELECTION</b>	Surface induction, induction, induction wok, gas, Hyper or HiLight cooktop and the Tepan stainless steel grill.	Surface induction, induction, induction wok, gas or Hyper cooktop and the Tepan stainless steel grill.
<b>DIMENSIONS (W × D × H)</b>	852 × 540 × 176 mm (PKA3/PKA3AB) 852 × 540 × 199 mm (PKAS3/PKAS3AB)	772 × 515 × 190 mm
<b>INTUITIVE OPERATION</b>	Touch-operated control knob with analogue/digital operation for intuitive use.	Digital operation using simple finger movement with multi-coloured sControl+ control system.
<b>HIGHLIGHT FUNCTIONS</b>	<ul style="list-style-type: none"> <li>· Automatic heat-up function</li> <li>· Cooking zone timer</li> <li>· Automatic extractor function</li> <li>· Bridging function*</li> <li>· Variable heat retention function</li> <li>· Super simple mode</li> </ul> <p>*With the Tepan stainless steel grill and surface induction cooktop</p>	<ul style="list-style-type: none"> <li>· Automatic heat-up function</li> <li>· Cooking zone timer</li> <li>· Automatic extractor function</li> <li>· Bridging function*</li> <li>· Variable heat retention function</li> </ul> <p>*With the Tepan stainless steel grill and surface induction cooktop</p>
<b>NOISE EMISSIONS</b>	Extremely quiet extraction system: 65 to 67 dB* *Depending on the cooktop extractor	Extremely quiet extraction system: 65 dB
<b>MINIMUM DIMENSIONS FOR INSTALLATION</b>	For kitchen cupboards with a min. width of 90 cm (2 cooktops).	For kitchen cupboards with a min. width of 80 cm (2 cooktops).
<b>ENERGY EFFICIENCY CLASS*</b>	PKA3/PKA3AB: PKAS3/PKAS3AB: *Applies to the exhaust air version	
<b>ODOUR FILTER</b>	In recirculation mode, odours are neutralised by a highly efficient activated charcoal filter. Depending on the filter, a filter change is recommended after 300 or 600 hours of operation.	In recirculation mode, odours are neutralised by a highly efficient activated charcoal filter. Depending on the filter, filter changes are recommended after 300 or 600 hours of operation.



[bora.com/professional](https://bora.com/professional)



[bora.com/classic](https://bora.com/classic)

# Modular systems that combine individual cooktops and effective extraction

## BORA Professional 3.0



Control knob  
Pro 3.0

**Pro cooktop extractor**  
Product no.: PKA3

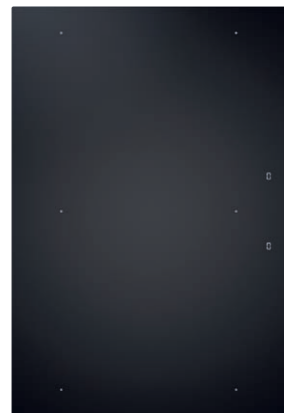
**Pro cooktop extractor system**  
Product no.: PKAS3



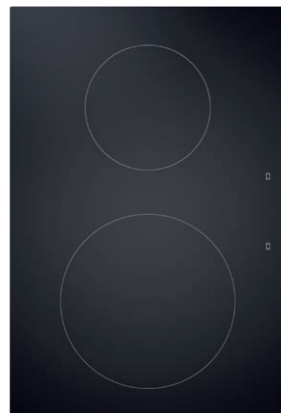
Control knob  
Pro 3.0, All Black

**Pro cooktop extractor, All Black**  
Product no.: PKA3AB

**Pro cooktop extractor system, All Black**  
Product no.: PKAS3AB



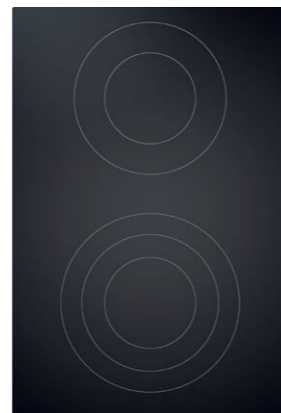
**Pro surface induction cooktop**  
Product no.: PKF13/PKF13AB



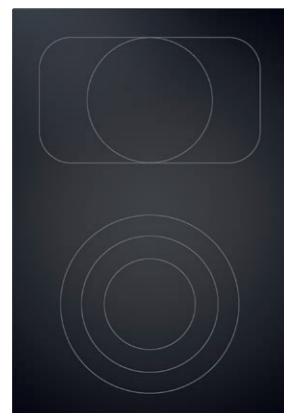
**Pro induction cooktop**  
Product no.: PKI3/PKI3AB



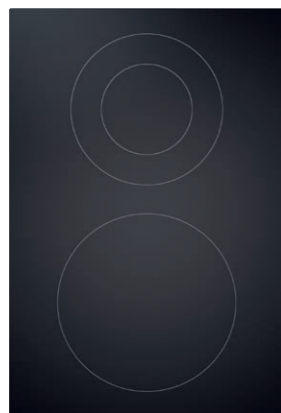
**Pro induction wok cooktop**  
Product no.: PKIW3/PKIW3AB



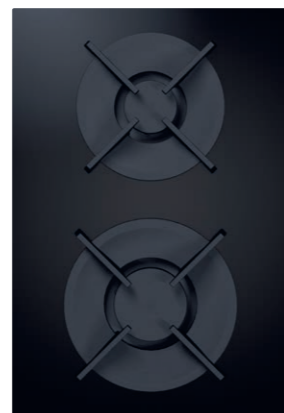
**Pro HiLight cooktop**  
Product no.: PKC3/PKC3AB



**Pro HiLight cooktop roaster**  
Product no.: PKCB3/PKCB3AB



**Pro Hyper cooktop**  
Product no.: PKCH3/PKCH3AB

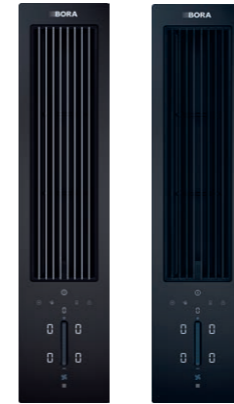


**Pro gas cooktop**  
Product no.: PKG3/PKG3AB

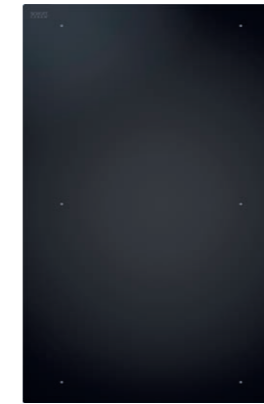


**Pro Tepan stainless steel grill**  
Product no.: PKT3/PKT3AB

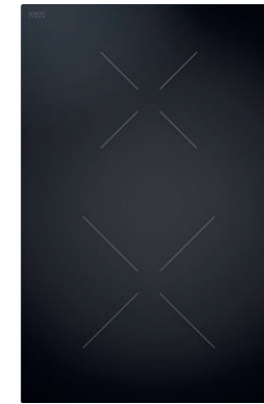
## BORA Classic 2.0



**Classic cooktop extractor/cooktop extractor, All Black**  
Product no.: CKA2/CKA2AB



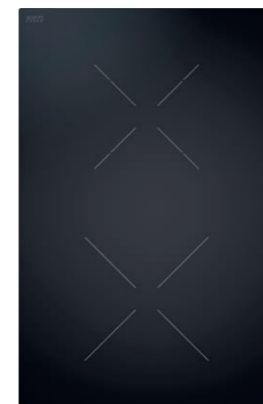
**Classic surface induction cooktop**  
Product no.: CKFI



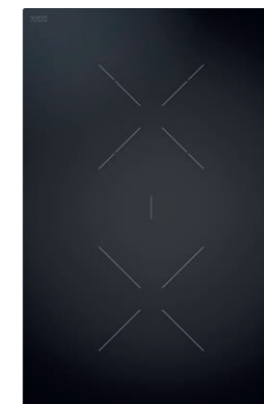
**Classic induction cooktop**  
Product no.: CKI



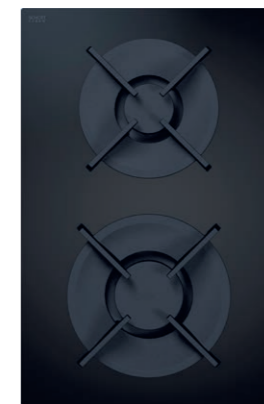
**Classic induction wok cooktop**  
Product no.: CKIW



**Classic Hyper cooktop**  
Product no.: CKCH



**Classic HiLight cooktop**  
Product no.: CKCB



**Classic gas cooktop**  
Product no.: CKG



**Classic Tepan stainless steel grill**  
Product no.: CKT

## Grease and odour filter



**Pro stainless steel grease filter**  
· Suitable for Professional 3.0  
Product no.: PKA1FF



**Classic stainless steel grease filter**  
· Suitable for Classic 2.0  
Product no.: CKAFFE

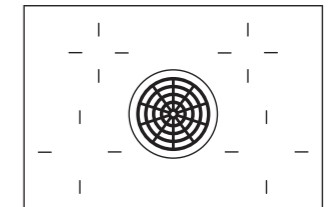
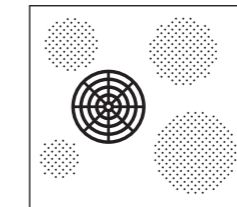
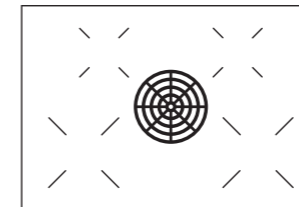
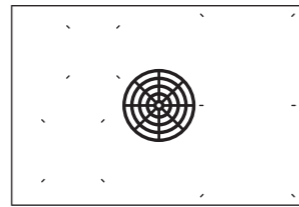
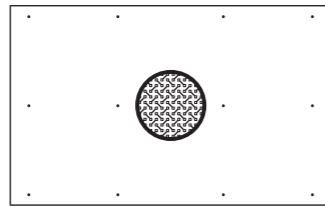


**Flexible air purification box**  
· Suitable for Professional 3.0 and Classic 2.0  
· Service life approx. 300 h/1.5 years  
Product no.: ULBF



**Activated charcoal filter set**  
· Suitable for Professional 3.0 and Classic 2.0  
· Service life approx. 600 h/3 years  
Product no.: ULB3AS

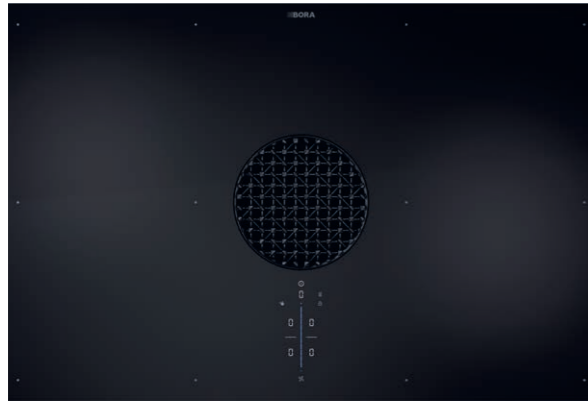
## Overview of all compact systems



	BORA X Pure	BORA M Pure
<b>COMPACT SYSTEM</b>	Compact system with four surface induction cooking zones.	Compact system with two surface induction cooking zones on the right and two induction cooking zones on the left.
<b>DIMENSIONS (W × D × H)</b>	830 × 515 × 199 mm	760 × 515 × 199 mm
<b>INTUITIVE OPERATION</b>	Intuitive digital operation using simple finger movements with white sControl technology featuring a blue slider.	Intuitive digital operation using simple finger movements with white sControl technology.
<b>HIGHLIGHT FUNCTIONS</b>	<ul style="list-style-type: none"> <li>· Automatic heat-up function</li> <li>· Cooking zone timer</li> <li>· Automatic extractor function</li> <li>· Bridging function</li> <li>· Variable heat retention function</li> </ul>	<ul style="list-style-type: none"> <li>· Automatic heat-up function</li> <li>· Cooking zone timer</li> <li>· Automatic extractor function</li> <li>· Bridging function*</li> </ul> <p>*With surface induction cooking zones, on the right</p>
<b>NOISE EMISSIONS</b>	Extremely quiet extraction system: 66 dB	Extremely quiet extraction system: 66 dB
<b>MINIMUM DIMENSIONS FOR INSTALLATION</b>	For kitchen cupboards with a min. width of 90 cm.	For kitchen cupboards with a min. width of 80 cm.
<b>ENERGY EFFICIENCY CLASS*</b> <small>*Applies to the exhaust air version</small>		
<b>ODOUR FILTER</b>	In recirculation mode, odours are neutralised by a highly efficient activated charcoal filter. A filter change is recommended after <b>150 hours of operation (1 year)</b> . Simple filter changes from above through the air inlet opening.	In recirculation mode, odours are neutralised by a highly efficient activated charcoal filter. A filter change is recommended after <b>150 hours of operation (1 year)</b> . Simple filter changes from above through the air inlet opening.
	<a href="https://bora.com/x-pure">bora.com/x-pure</a>	<a href="https://bora.com/m-pure">bora.com/m-pure</a>

	BORA Pure	BORA S Pure	BORA Basic
<b>COMPACT SYSTEM</b>	Compact system with four induction cooking zones.	Compact system with four different-sized induction cooking zones.	Compact system with four radiant cooking zones.
<b>DIMENSIONS (W × D × H)</b>	760 × 515 × 199 mm	580 × 515 × 199 mm	760 × 515 × 196 mm
<b>INTUITIVE OPERATION</b>	Intuitive digital operation using simple finger movements with red sControl technology.	Intuitive digital operation using simple finger movements with red sControl technology.	Intuitive digital operation using simple finger movements.
<b>HIGHLIGHT FUNCTIONS</b>	<ul style="list-style-type: none"> <li>· Automatic heat-up function</li> <li>· Cooking zone timer</li> <li>· Automatic extractor function</li> </ul>	<ul style="list-style-type: none"> <li>· Automatic heat-up function</li> <li>· Cooking zone timer</li> <li>· Automatic extractor function</li> <li>· Coffee function</li> </ul>	<ul style="list-style-type: none"> <li>· Automatic heat-up function</li> <li>· Cooking zone timer</li> </ul>
<b>NOISE EMISSIONS</b>	Extremely quiet extraction system: 66 dB	Extremely quiet extraction system: 66 dB	Extremely quiet extraction system: 64 dB
<b>MINIMUM DIMENSIONS FOR INSTALLATION</b>	For kitchen cupboards with a min. width of 80 cm.	For kitchen cupboards with a min. width of 60 cm.	For kitchen cupboards with a min. width of 80 cm.
<b>ENERGY EFFICIENCY CLASS*</b> <small>*Applies to the exhaust air version</small>			
<b>ODOUR FILTER</b>	In recirculation mode, odours are neutralised by a highly efficient activated charcoal filter. A filter change is recommended after <b>150 hours of operation (1 year)</b> . Simple filter changes from above through the air inlet opening.	In recirculation mode, odours are neutralised by a highly efficient activated charcoal filter. A filter change is recommended after <b>150 hours of operation (1 year)</b> . Simple filter changes from above through the air inlet opening.	In recirculation mode, odours are neutralised by a highly efficient activated charcoal filter. A filter change is recommended after <b>150 hours of operation (1 year)</b> .
	<a href="https://bora.com/pure">bora.com/pure</a>	<a href="https://bora.com/s-pure">bora.com/s-pure</a>	<a href="https://bora.com/basic">bora.com/basic</a>

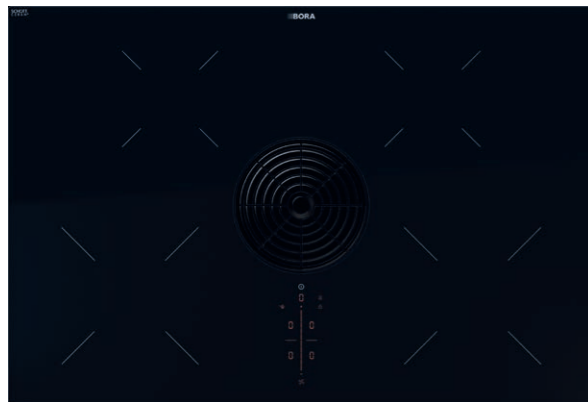
The compact systems combine a cooktop and an effective extractor in a single appliance



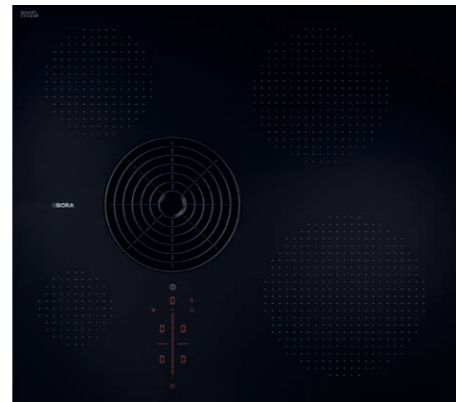
**X Pure exhaust air/recirculation**  
Product no.: PUXA/PUXU Dimensions: 830 × 515 mm



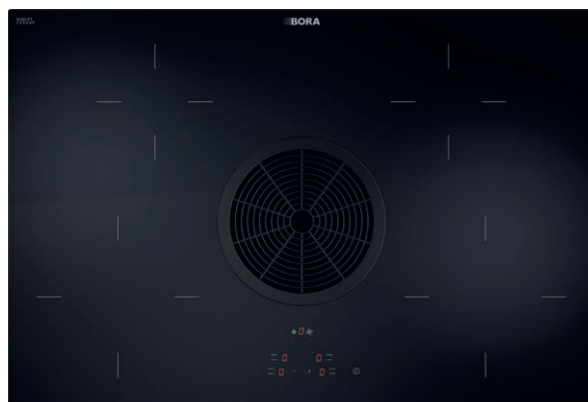
**M Pure exhaust air/recirculation**  
Product no.: PURMA/PURMU Dimensions: 760 × 515 mm



**Pure exhaust air/recirculation**  
Product no.: PURA/PURU Dimensions: 760 × 515 mm



**S Pure exhaust air/recirculation**  
Product no.: PURSA/PURSU Dimensions: 580 × 515 mm



**Basic exhaust air/recirculation**  
Product no.: BHA/BHU Dimensions: 760 × 515 mm



**Basic/GP4 air inlet nozzle**  
Product no.: GP4ED



**X Pure air inlet nozzle**  
Product no.: PUXED



**Pure air inlet nozzle**

Suitable for BORA M Pure, Pure and S Pure

- Black: product no.: PUED    Red: product no.: PUEDR    Blue: product no.: PUEDB    Orange: product no.: PUEDO
- Greige: product no.: PUEDG    Jade green: product no.: PUEDJ    Sunshine yellow: product no.: PUEDS    Light grey: product no.: PUEDL



**Pure stainless steel grease filter**

Suitable for Pure, M Pure, X Pure and S Pure

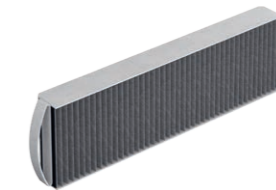
Product no.: PUEF



**Basic stainless steel grease filter**

Suitable for Basic and GP4

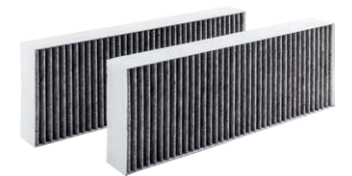
Product no.: BFF



**Pure activated charcoal filter**

Suitable for Pure, M Pure, X Pure and S Pure

Product no.: PUAKF

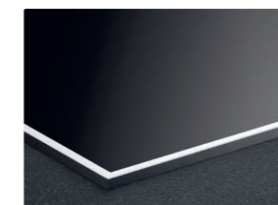


**Basic activated charcoal filter**

Suitable for Basic and GP4

Product no.: BAKFS

Accessories for surface mounting modular and compact systems



**Cooktop frames**

- Width 830 mm: Product no.: BKR830
- Width 760 mm: Product no.: BKR760
- Width 580 mm: Product no.: BKR580



**BORA Classic inlay frame**

Product no.: CER



**Side frame for a cooktop depth of 515 mm**

Product no.: USL515



**All Black side frame for a cooktop depth of 515 mm**

Product no.: USL515AB

BORA X BO – the professional steam oven for your home.



**X BO steam oven**

- Dimensions (W × H × D): 598 × 599 × 580 mm
- with mains water connection
- Product no.: XBO

# BORA steam cooking and baking systems

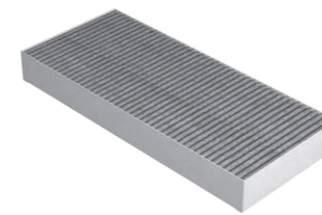
Baking, steaming and much more – with premium appliances for home use.

**BORA X BO**

<p>☆ <b>PERFORMANCE</b></p>	<p>Ultra-fast performance: heats up to 200 degrees in less than 4 minutes. Optimum steam performance with up to 6 kW.</p>
<p>👆 <b>INTUITIVE OPERATION</b></p>	<p>19-inch touch display responds to a simple tap or swipe, just like a smartphone.</p>
<p>👨‍🍳 <b>AUTOMATIC PROGRAMMES</b></p>	<p>Over 140 automatic programmes and special programmes with multiple additional functions that can be continually updated via Wi-Fi.</p>
<p>↗️ <b>COOKING CHAMBER VOLUME</b></p>	<p>Maximum cooking chamber capacity: 53-litre cooking chamber volume, uniform results on 3 shelf levels.</p>
<p>💧 <b>CLEANING</b></p>	<p>Fully automated intensive cleaning and drying programmes.</p>
<p>📊 <b>ENERGY EFFICIENCY CLASS</b></p>	<p>A+++ ↑ D <b>A</b></p>



[bora.com/x-bo](http://bora.com/x-bo)



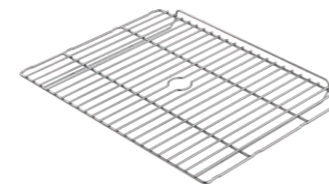
**X BO odour filter**  
Product no.: XBOGF



**X BO cleaning cartridge**  
Product no.: XBORK



**X BO frame spacer**  
Product no.: XBORS



**X BO oven rack**  
Product no.: XBOBGR



**X BO universal tray**  
Product no.: XBOUB



**X BO deep universal tray**  
Product no.: XBOUBT



**X BO perforated stainless steel tray**  
Product no.: XBOGBG

BORA multi-drawer as the ideal complement.



**Multi-drawer 290 mm**  
· without glass front: product no.: MS290  
· with glass front: product no.: MSS290



**Multi-drawer 140 mm**  
· without glass front: product no.: MS140  
· with glass front: product no.: MSS140



[bora.com/multi-drawer](http://bora.com/multi-drawer)



### BORA Cool



**Cool refrigerator**  
 · Particularly quiet: 33 dB(A)  
 · Capacity: 296 litres  
 · Dimensions (H × W × D):  
 1,770 × 559 × 546 mm  
 Product no.: C178K



**Cool refrigerator with 4-star freezer compartment**  
 · Particularly quiet: 34 dB(A)  
 · Capacity: 276 litres incl. 27 litres freezer space  
 · Dimensions (H × W × D):  
 1,770 × 559 × 546 mm  
 Product no.: C178KGF

## BORA refrigeration and freezing systems

Smart design meets effective cooling.

	BORA Cool	BORA Cool Combi	BORA Freeze
<b>FRESHNESS TECHNOLOGY</b>	3 x BORA Fresh zero compartments at almost 0 °C.	2 x BORA Fresh zero compartments at almost 0 °C.	—
<b>NO FROST/ SMART FROST</b>	Smart Frost* *Excluding BORA Cool refrigerator C178K	No Frost	No Frost
<b>ODOUR FILTER</b>	Effective odour filtration	Effective odour filtration	—
<b>SIMPLE CLEANING</b>	Many removable elements are dishwasher safe and the absence of ornamental trims enables simple wiping.	Many removable elements are dishwasher safe and the absence of ornamental trims enables simple wiping.	Many removable elements are dishwasher safe.
<b>OPTIMUM REFRIGERATION</b>	Uniform temperatures throughout the refrigerator thanks to convection cooling.	Uniform temperatures throughout the refrigerator thanks to convection cooling. Separate cooling circuits in the refrigerator and freezer compartments.	Special programmes can change the freezing conditions for a set period in line with specific situations.
<b>SOPHISTICATED ERGONOMICS</b>	Pull-out shelves with removable trays make it easy to put groceries away.	Pull-out shelves with removable trays make it easy to put groceries away.	Easy-to-pull-out shelves, some with an open design, make it particularly easy to put groceries away.
<b>ENERGY EFFICIENCY CLASS</b>	A ↑ G D	A ↑ G D	A ↑ G E

#### Better features package for BORA Cool\*

- Multi-use spiked mat
- Multi-tray
- 2 x storage boxes
- Sorting tubs in two sizes

Product no.: K178S1



#### Best features package for BORA Cool\*

- 2 x multi-use spiked mats
- Multi-tray
- 2 x storage boxes
- Sorting tubs in two sizes
- Serving board
- Multi-use hanging rack
- Refrigerator storage tray
- Bottle opener

Product no.: K178S2



Order accessories at [shop.bora.com](http://shop.bora.com)

\*The BORA Better and Best features packages are not included as standard.

## BORA Cool Combi



### Cool refrigerator-freezer

- Particularly quiet: 34 dB(A)
- Capacity: 245 litres incl. 70 litres freezer space
- Dimensions (H x W x D): 1,770 x 559 x 546 mm

Product no.: C178KG



### Cool refrigerator-freezer with Ice Maker

- Particularly quiet: 34 dB(A)
- Capacity: 246 litres incl. 71 litres freezer space
- Dimensions (H x W x D): 1,770 x 559 x 546 mm

Product no.: C178KGW

## BORA Freeze



### Freeze freezer with water connection

- Quiet 33 dB(A)
- Capacity: 213 litres
- Dimensions (H x W x D): 1,770 x 559 x 546 mm

Product no.: F178GW



### Side by side: Freeze freezer and Cool refrigerator combined

- Capacity: 213 litres freezer space and 296 litres refrigerator space
- Dimensions (H x W x D): 1,770 x 1118 x 546 mm

Product no.: F178GW + C178K

### Better features package for BORA Cool Combi\*

- Multi-use spiked mat
- Multi-tray
- Storage box
- Sorting tubs in two sizes

Product no.: K178GS1



### Best features package for BORA Cool Combi\*

- Multi-use spiked mat
- Multi-tray
- Storage box
- Sorting tubs in two sizes
- Serving board
- Multi-use hanging rack
- Cube form
- Bottle opener

Product no.: K178GS2



\*The BORA Better and Best features packages are not included as standard.

### Better features package for BORA Freeze\*

- 3 x cube forms
- Wine cooler

Product no.: G178S1



### Best features package for BORA Freeze\*

- 3 x cube forms
- Wine cooler
- 2 x storage boxes

Product no.: G178S2



\*The BORA Better and Best features packages are not included as standard.



Order accessories at [shop.bora.com](https://shop.bora.com)





**Horizon fixed**

Black: product no.: LHFSW  
 Moss green: product no.: LHFMG  
 Rose gold: product no.: LHFRG

**Horizon move**

Black: product no.: LHMSW  
 Moss green: product no.: LHMMG  
 Rose gold: product no.: LHMRG



**Stars, surface-mounted**

Black: product no.: LSASW  
 Moss green: product no.: LSAMG  
 Rose gold: product no.: LSARG



**Stars, built-in**

Black: product no.: LSESW  
 Moss green: product no.: LSEMG  
 Rose gold: product no.: LSERG



**Stars, circular**

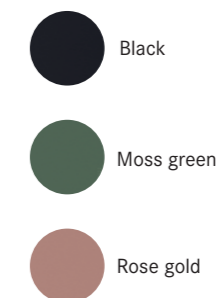
Black: product no.: LSZSW  
 Moss green: product no.: LSZMG  
 Rose gold: product no.: LSZRG



**Stars, linear**

Black: product no.: LLSW  
 Moss green: product no.: LLMG  
 Rose gold: product no.: LLRG

**Colours**



# BORA lighting

Minimalist design and maximum light.

	BORA Horizon	BORA Stars
<b>LIGHTING MOOD</b>	2-in-1 lighting: as direct light over a cooktop and indirect ambient light.	Elegant lighting accents: as direct light for a pleasant ambiance.
<b>CONTROL</b>	Intuitive gesture control: light off/ on, dim light, change colour temperature, couple and decouple direct and indirect lighting.	Rotary knob/light switch: infinite dimming of the 3-light circular and 3-light linear versions .
<b>COLOUR TEMPERATURE</b>	2,700-5,000 K	3,000 K
<b>HEIGHT ADJUSTABLE</b>	Height adjustable without tools, on the ceiling housing on the 'fixed' version and directly on the 'move' version by moving the light fixture and down.	Individually height-adjustable on the ceiling housing without tools.
<b>POWER</b>	40 W	3 W / Stars pendant light
<b>LUX</b>	1,600 lm direct / 770 lm indirect	Stars 1-light: 230 lm Stars 3-light: 690 lm
<b>ENERGY EFFICIENCY CLASS</b>		



Available to order at [shop.bora.com](http://shop.bora.com)

# Supplies and accessories

The perfect supplies and functional accessories for all BORA products.

## BORA QVac

### QVac vacuum sealing set

- QVac built-in vacuum sealer
- 1-litre vacuum box
- 2-litre vacuum box
- Marinating ring
- 2 × vacuum seals
- Vacuum bag set



All Black:  
Product no.:  
QVACAB

Stainless Steel:  
Product no.:  
QVACSS



### QVac vacuum bag set

5 × 0.6 litres / 5 × 1.5 litres  
/ 5 × 2.1 litres  
Product no.: QVACVBES



### QVac 0.6-litre vacuum bag

15 × 0.6 litres  
Product no.: QVACVBE1



### QVac 1.5-litre vacuum bag

15 × 1.5 litres  
Product no.: QVACVBE2



### QVac 2.1-litre vacuum bag

15 × 2.1 litres  
Product no.: QVACVBE3



### QVac 2-litre vacuum box

2 × 2 litres  
Product no.: QVACVBO2



### QVac 1-litre vacuum box

2 × 1 litres  
Product no.: QVACVBO1



### 2 × QVac vacuum seals

· Suitable for storing liquids in bottles  
Product no.: QVACVV



### QVac marinating ring

· Compatible with BORA QVac vacuum boxes  
· Ultra-rapid marinating  
Product no.: QVACMR

The one and two-litre BORA vacuum boxes are ideal for keeping vacuum-sealed cooked meals for several days or even freezing them. When used in combination with the marinating ring, fish or meat can be optimally marinated in just ten minutes.

Once bottles have been opened, liquids can only be kept in the fridge for a few days without their taste deteriorating. With the vacuum seal, on the other hand, the full flavour is retained for several days. This accessory can also be optimally used to store fluids such as high quality oils, stocks or juices.

The marinating ring, which is placed on one of the associated vacuum boxes, creates a vacuum. This opens the pores in the food more quickly so it takes a maximum of ten minutes for the marinade to absorb.

### BORA grill pan for surface induction

- Technically optimised for use on BORA surface induction cooktops
  - Simple to clean and easy to remove food remnants thanks to the high-quality non-stick coating
  - Silicone base pads prevent the glass ceramic from getting scratched
  - Compatible with the BORA X BO and ovenproof up to 250 °C
  - Minimalist design
- Product no.: KWGPFI



### Induction wok pan

- Suitable for BORA induction wok cooktops
  - Multi-layered material with special alloy
  - High-quality stainless steel handle
- Product no.: HIW1



### Tepan spatula

- Suitable for Tepan stainless steel grills
  - Suitable for turning food and cleaning the Tepan stainless steel grill
- Product no.: PTTS1



### Socket type F/ All Black

Suitable for DE, ES, IT, AT, LU, PT, RU, SE, NL  
Product no.: USTF/USTFAB



### Socket type E/ All Black

Suitable for FR, PL, BE, CZ, SK  
Product no.: USTE/USTEAB



### Socket type J/ All Black

Suitable for CH, LI  
Product no.: USTJ/USTJAB

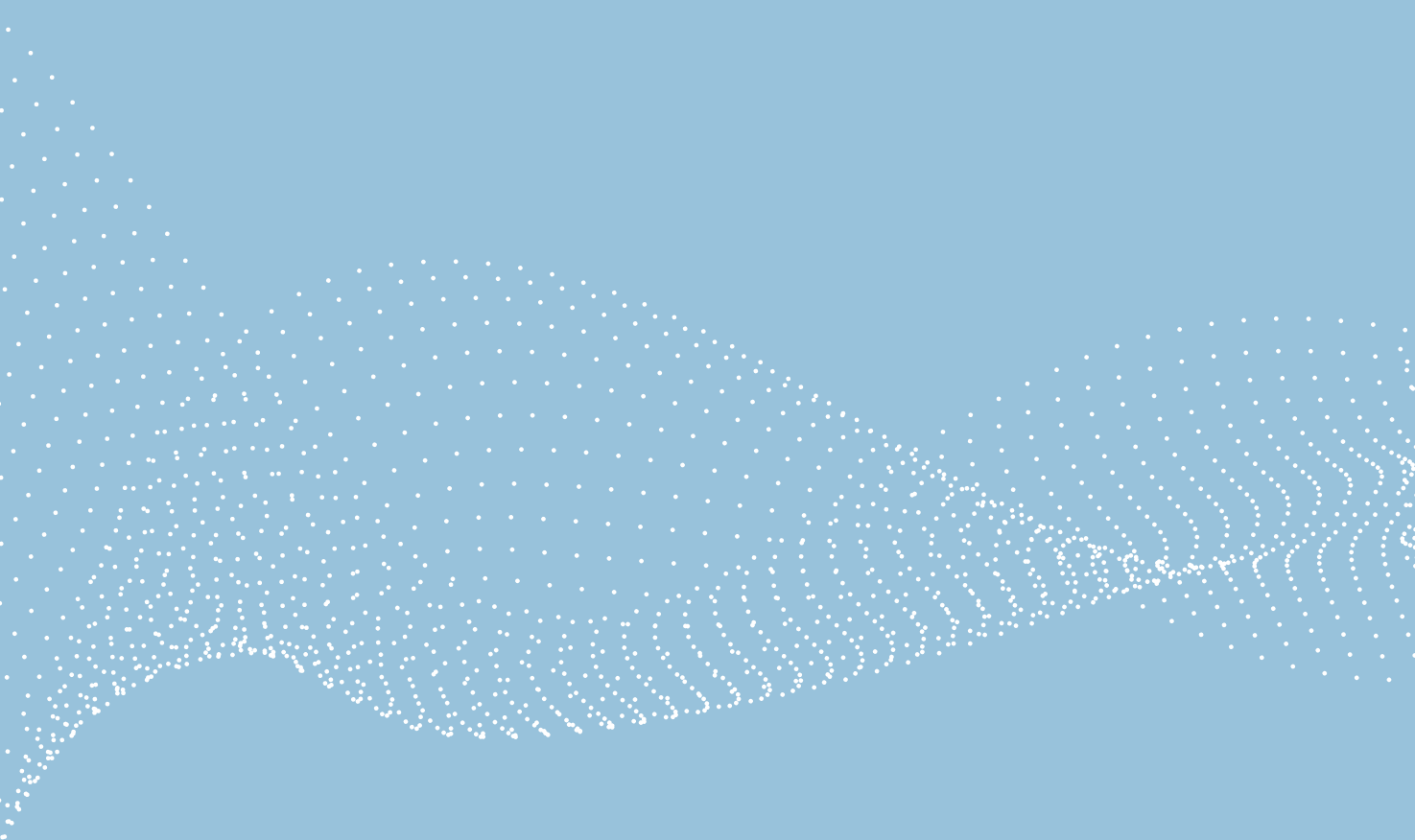


### Socket type G/ All Black

Suitable for UK, AE, SG  
Product no.: USTG/USTGAB



Order accessories at  
[shop.bora.com](http://shop.bora.com)



Experience BORA  
live at an event  
near you.